

# A PLAT OF STAMFORD AT SUNSET TRACE

BEING PLAT NO. 36 OF MARTIN DOWNS, A P.U.D.  
LYING IN SECTION 13, TWP. 38 S., RGE. 40 E., MARTIN COUNTY, FLORIDA  
SHEET 3 OF 5  
JANUARY, 1988

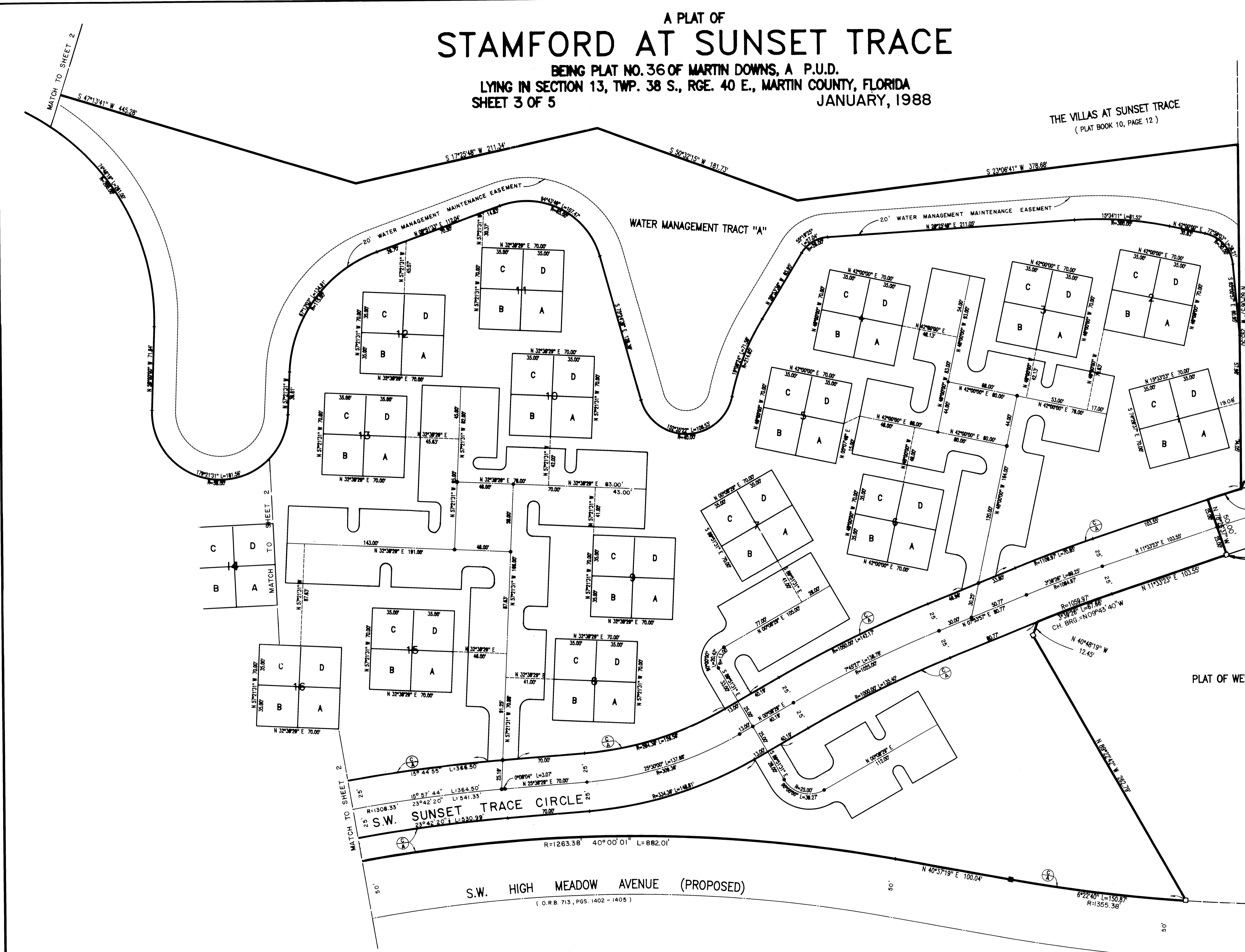
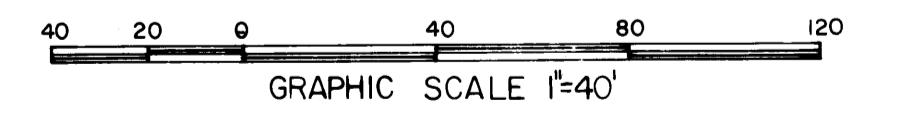
I, MARSHA STILLER, CLERK OF THE CIRCUIT COURT OF MARTIN COUNTY, FLORIDA, HEREBY CERTIFY THAT THIS PLAT WAS FILED FOR RECORD IN PLAT BOOK 11, PAGE 11, MARTIN COUNTY, FLORIDA PUBLIC RECORDS, THIS DAY OF \_\_\_\_\_, A.D. 19\_\_\_\_.  
MARSHA STILLER, CLERK OF CIRCUIT COURT MARTIN COUNTY, FLORIDA  
By: \_\_\_\_\_ DEPUTY CLERK  
FILE NO. \_\_\_\_\_

THE VILLAS AT SUNSET TRACE  
(PLAT BOOK 10, PAGE 12)

PLAT OF SUNSET TRACE, PHASE 1  
(PLAT BOOK 9, PAGE 53)

PLAT OF WELLESLEY AT SUNSET TRACE, PHASE 1  
(PLAT BOOK 10, PAGE 80)

POINT OF BEGINNING  
S.E. CORNER, PLAT OF SUNSET TRACE, PHASE 1,  
BEING PLAT NO. 8 OF MARTIN DOWNS, A P.U.D.,  
PLAT BOOK 9, PAGE 53 MARTIN COUNTY, FLORIDA.



**Landmark Surveying & Mapping Inc.**  
1850 FOREST HILL BOULEVARD  
PH. (305)433-5405 SUITE 100 W.P.B. FLORIDA

A PLAT OF  
**STAMFORD AT SUNSET TRACE**